



US009773994B2

(12) **United States Patent**  
**Kim**

(10) **Patent No.:** **US 9,773,994 B2**  
(45) **Date of Patent:** **Sep. 26, 2017**

(54) **ORGANIC LIGHT-EMITTING DIODE DISPLAY FOR SUPPRESSING ORGANIC LIGHT-EMITTING ELEMENT FROM BEING DAMAGED**

(58) **Field of Classification Search**  
CPC . H01L 27/32; H01L 27/3202; H01L 27/3204; H01L 27/3209; H01L 27/3225; H01L 27/3251; H01L 27/3258; H01L 2227/32; H01L 2924/12044  
See application file for complete search history.

(71) Applicant: **LG DISPLAY CO., LTD.**, Seoul (KR)

(56) **References Cited**

(72) Inventor: **Ji-Min Kim**, Seoul (KR)

U.S. PATENT DOCUMENTS

(73) Assignee: **LG DISPLAY CO., LTD.**, Seoul (KR)

2014/0021499 A1\* 1/2014 Jang ..... H01L 51/0097 257/98

(\* ) Notice: Subject to any disclaimer, the term of this patent is extended or adjusted under 35 U.S.C. 154(b) by 0 days.

2014/0070187 A1 3/2014 Cho et al.  
2014/0070195 A1 3/2014 Choi et al.  
2016/0093641 A1\* 3/2016 Takahashi ..... H01L 27/1225 257/43

(21) Appl. No.: **14/925,599**

FOREIGN PATENT DOCUMENTS

(22) Filed: **Oct. 28, 2015**

EP 2581958 A2 4/2013  
EP 2733763 A2 5/2014

(65) **Prior Publication Data**

US 2016/0126498 A1 May 5, 2016

\* cited by examiner

*Primary Examiner* — Hoai V Pham

(74) *Attorney, Agent, or Firm* — Dentons US LLP

(30) **Foreign Application Priority Data**

Oct. 31, 2014 (KR) ..... 10-2014-0149932

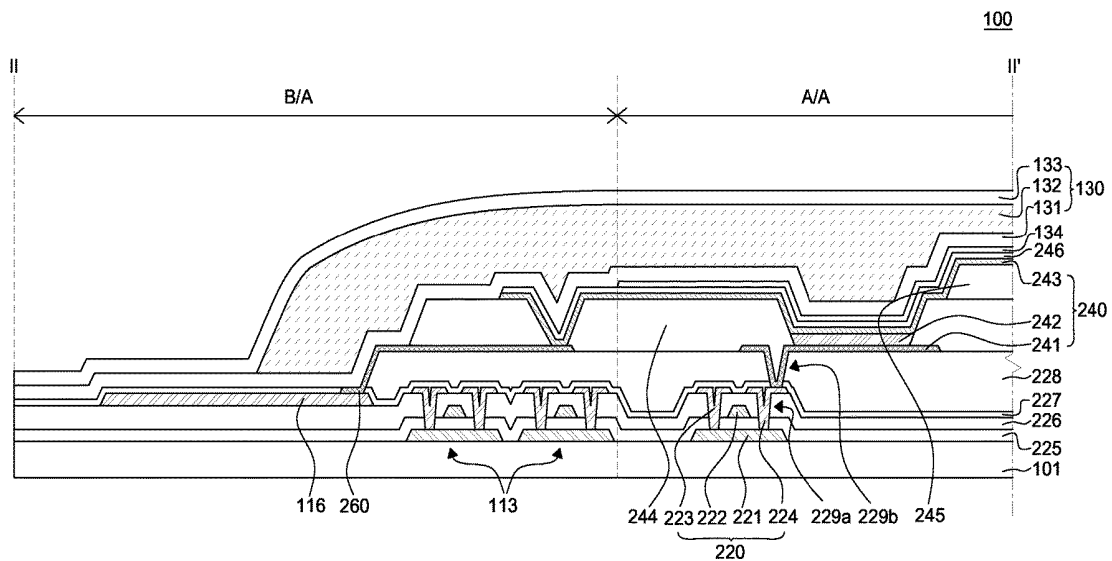
(57) **ABSTRACT**

An organic light-emitting display (OLED) device includes: a lower substrate; an organic light-emitting element disposed on the lower substrate; an anti-oxidation layer covering the organic light-emitting element; an inorganic oxide encapsulation layer covering the anti-oxidation layer; a first organic layer covering the inorganic oxide encapsulation layer; and a first inorganic encapsulation layer covering the first organic layer. The anti-oxidation layer is configured to suppress the organic light-emitting element from being oxidized by oxygen (O<sub>2</sub>) plasma at least in a pixel area.

**15 Claims, 5 Drawing Sheets**

(51) **Int. Cl.**  
**H01L 27/32** (2006.01)  
**H01L 51/52** (2006.01)

(52) **U.S. Cl.**  
CPC ..... **H01L 51/5218** (2013.01); **H01L 51/5234** (2013.01); **H01L 51/5253** (2013.01); **H01L 2251/5315** (2013.01)



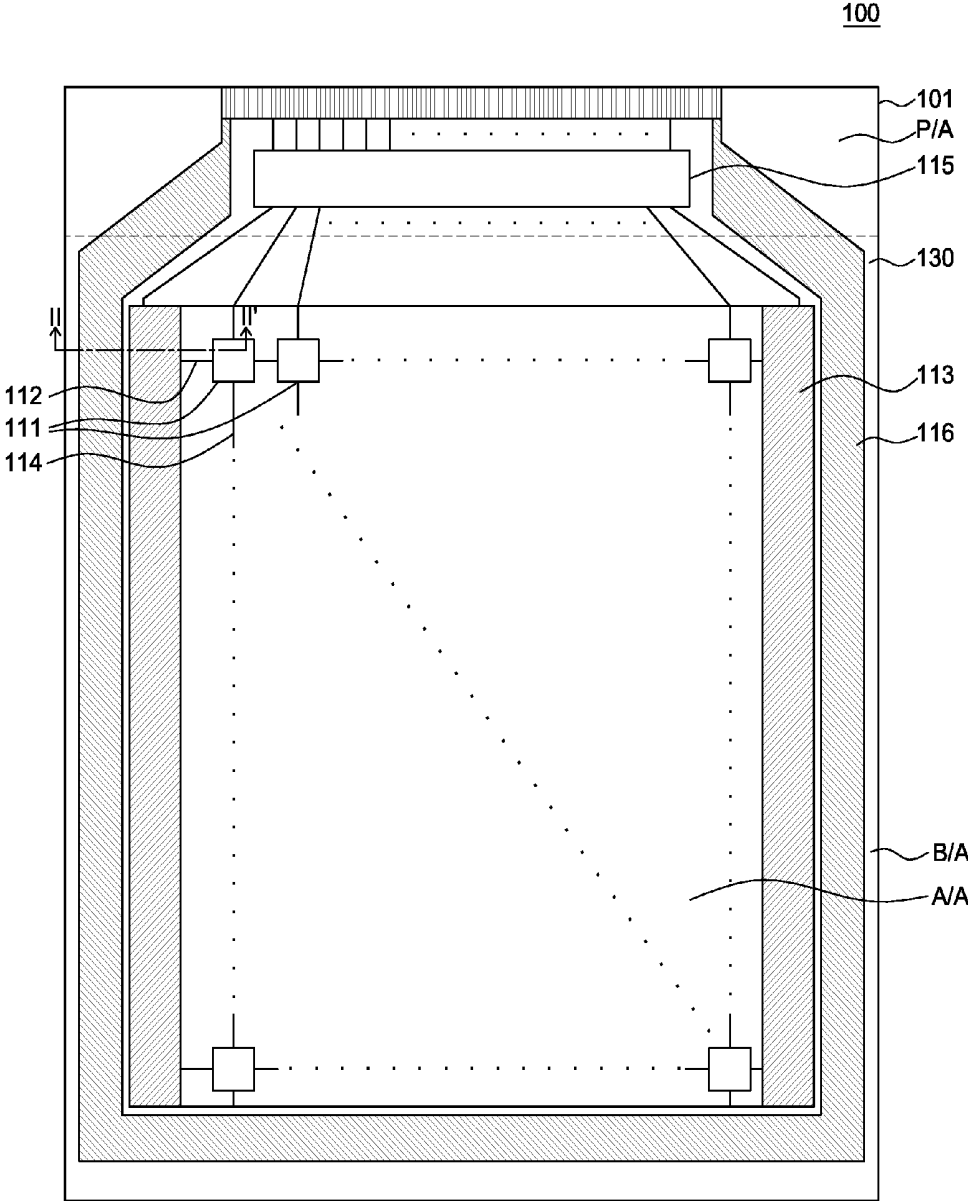


FIG. 1

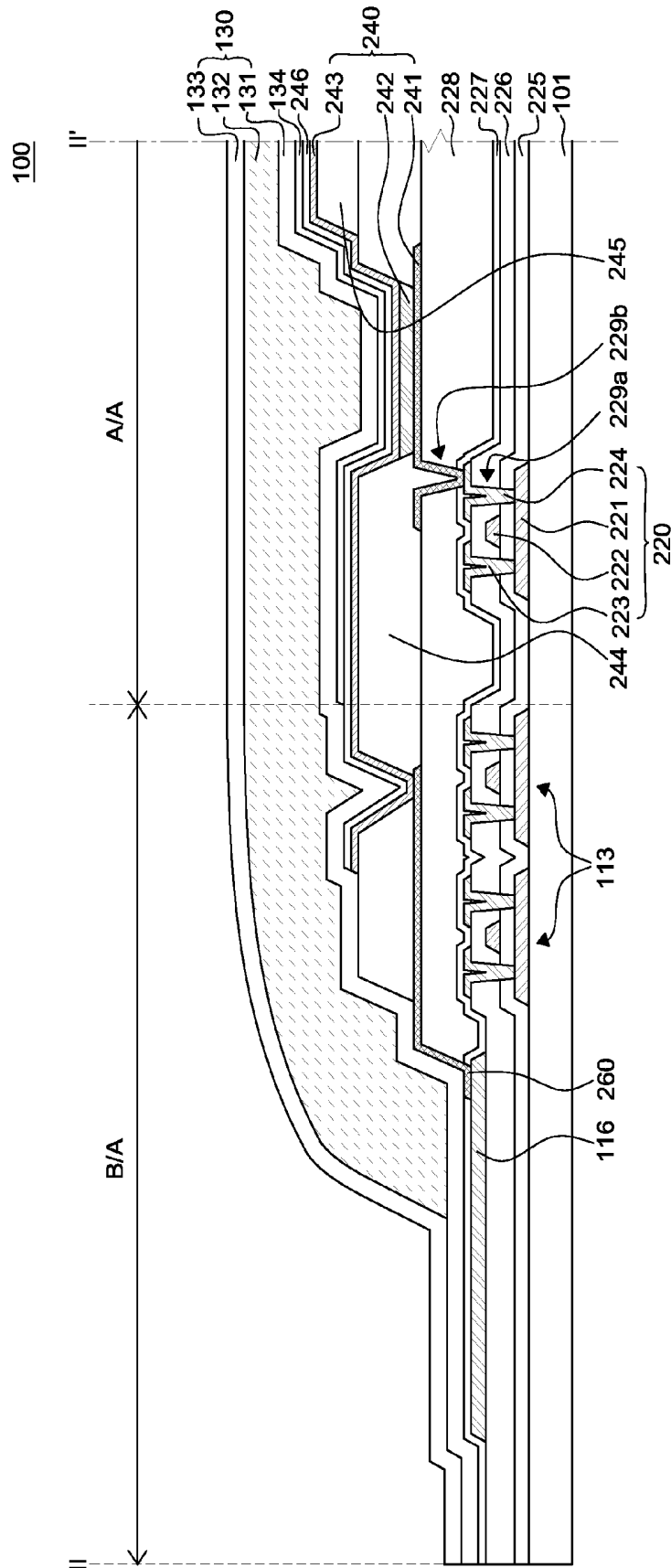


FIG. 2

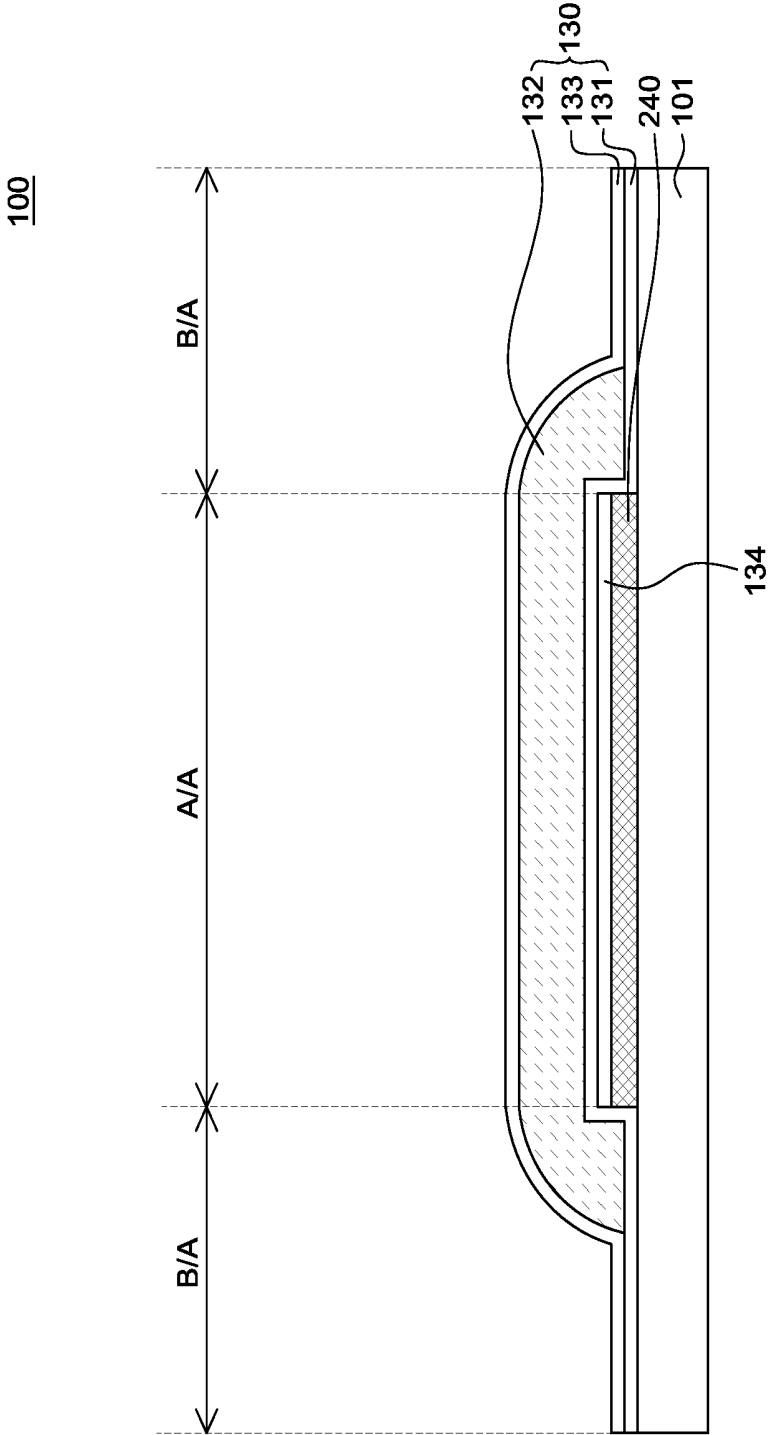


FIG. 3

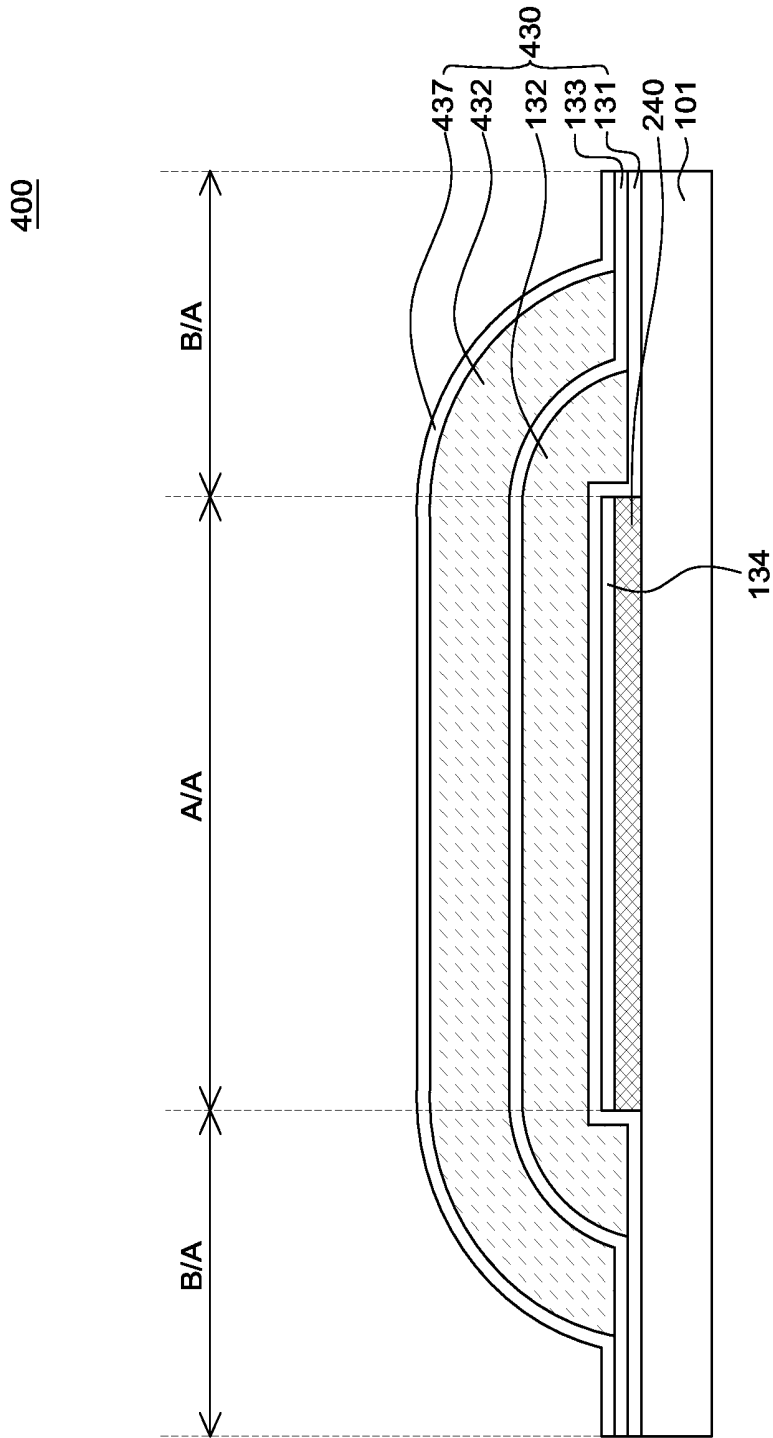


FIG. 4

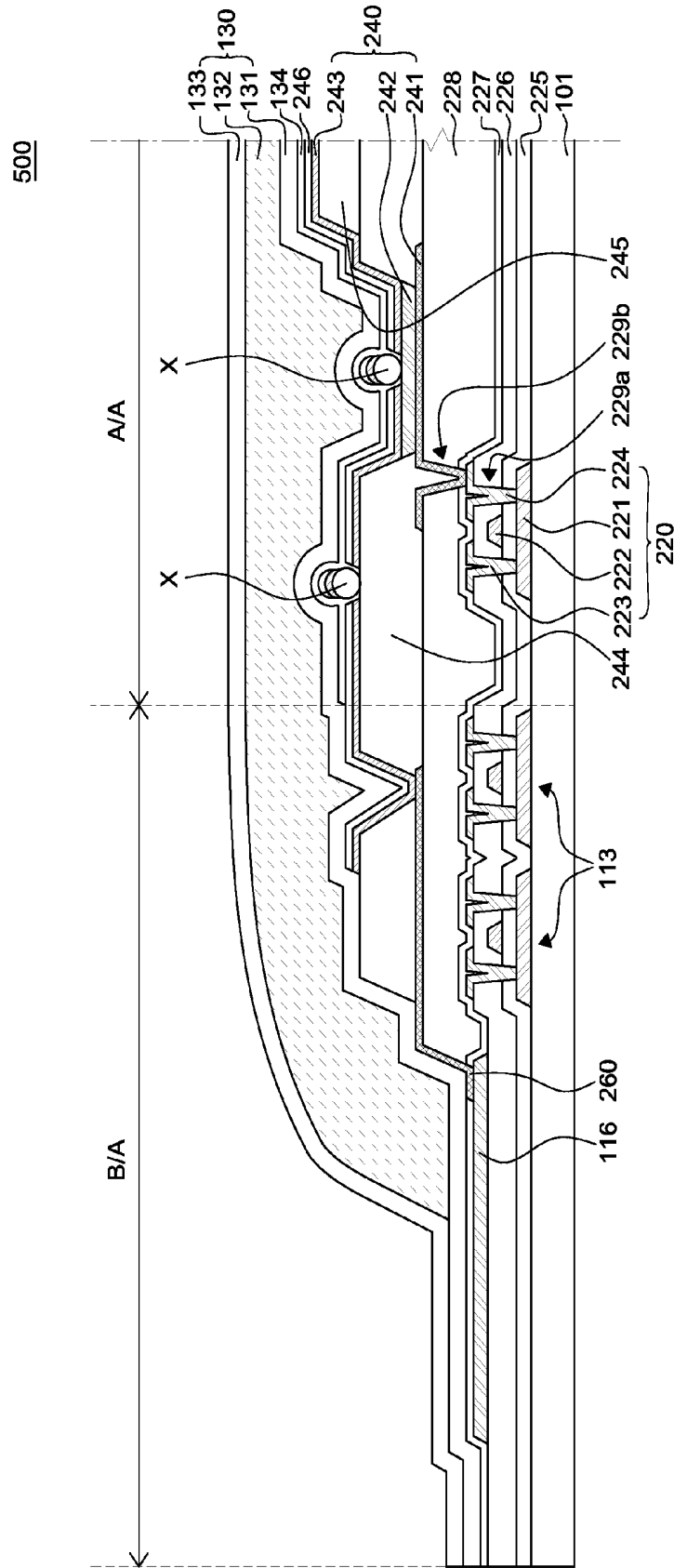


FIG. 5

**ORGANIC LIGHT-EMITTING DIODE  
DISPLAY FOR SUPPRESSING ORGANIC  
LIGHT-EMITTING ELEMENT FROM BEING  
DAMAGED**

CROSS-REFERENCE TO RELATED  
APPLICATIONS

This application claims priority of Korean Patent Application No. 10-2014-0149932 filed on Oct. 31, 2014, which is hereby incorporated by reference for all purposes as if fully set forth herein.

BACKGROUND OF THE INVENTION

Field of the Invention

The present invention relates to an organic light-emitting display (OLED) device. More specifically, the present invention relates to an OLED device including an anti-oxidation layer for suppressing an organic light-emitting element from being damaged by oxygen (O<sub>2</sub>) plasma generated during a process of forming a transparent encapsulation layer to protect the organic light-emitting element.

Discussion of the Related Art

As the era of information technology has truly begun, the field of display devices has been rapidly growing, representing information in electrical signals in the form of visual images. In accordance with this, research is ongoing into various display devices, which need to be made thinner, lighter and more efficient in terms of power consumption. Display devices include a liquid crystal display (LCD) device, a plasma display panel (PDP) device, a field emission display (FED) device, an electro-wetting display (EWD) device, and an organic light emitting display (OLED) device, etc.

An OLED device is capable of producing light on its own (self-emissive). Thus, the OLED devices does not require an additional light source, unlike a liquid crystal display (LCD) device. Therefore, an OLED device can be made lighter and thinner than an LCD device. Further, an OLED device has advantages in that it is driven with low voltage to consume less power, and can present vivid colors, has fast response time, wide viewing angle and infinite contrast ratio (CR). For these reasons, an OLED device is currently considered as the next generation display device.

For a top-emission OLED device, a transparent electrode or a transfective (or a translucent or a semi-transparent) electrode is employed as a cathode in order to pass light generated (or emitted) in the organic light-emitting layer upwardly (i.e. towards the top) through the cathode. In addition, in order to ensure reliability of an OLED device, an encapsulation unit is formed on the organic light-emitting element including an organic light-emitting layer. Such layer is for protecting the organic light-emitting element from oxygen, moisture or physical impact or foreign matters (e.g., particles, debris or dust) possibly created during manufacturing process. In a top emission type OLED device, a glass encapsulation substrate or a thin-film encapsulation structure (encapsulation unit) in which an inorganic encapsulation layer and an organic layer are alternately stacked on one another for suppressing moisture permeation, etc. may be used as the encapsulation unit.

Such a thin-film encapsulation structure can reduce the thickness of flexible OLED devices, and thus much research is being conducted to improve thin-film encapsulation structures. Unfortunately, as an encapsulation unit is formed after an organic light-emitting element is formed, certain process

constraints exist. For example, an encapsulation unit cannot be formed by a process carried out at a high temperature since the organic light-emitting layer would then be subject to undesirably high heat.

In addition, an inorganic encapsulation layer can effectively suppress oxygen and moisture permeation, but cracks or seams may occur in the inorganic encapsulation layer due to foreign matters or level differences (i.e. discontinuities caused by various step levels).

An organic layer planarizes the level difference (e.g., steps, tapers, or contact holes) made by a bank or a spacer and compensate foreign matters by covering cracks and seams at an inorganic encapsulation layer. However, despite such planarizing efforts, the organic layer cannot fully suppress oxygen and moisture permeation, and some amount of oxygen and moisture still permeate through the organic layer.

SUMMARY OF THE INVENTION

The inventor of the application has noted the fact that various kinds of foreign matter (debris) are created during a process of forming an organic light-emitting element on a substrate. Such foreign matter may occur due to different causes. For example, particles of organic materials used in forming an organic light-emitting element may adhere to one another to create foreign matter. Or, some metal particles are dislodged while depositing a cathode may adhere to one another to create foreign matter.

Such foreign matter typically have a size of 1 μm or greater. In addition, such foreign matter may float around and ultimately rest on an organic light-emitting element, a bank or a spacer, causing defects thereto. For a top emission OLED device, a cathode has to be transparent and thus is formed very thin (e.g., the cathode is typically thinner than the size of debris particles). Accordingly, foreign matter may lead to cracks in the cathode. As a result, moisture may permeate through the cracks in the cathode to reach the organic light-emitting element.

The inventor of the application has looked into forming an encapsulation unit that protects an organic light-emitting element by a typical atomic layer deposition (ALD) method. For example, forming an encapsulation layer made of aluminum oxide (e.g., Al<sub>2</sub>O<sub>3</sub>), which is advantageous for thin, flexible display devices, has been considered. In such typical ALD method, oxygen (O<sub>2</sub>) plasma used in forming the encapsulation layer oxidizes an organic light-emitting element via cracks or seams caused by foreign matter. Once an organic light-emitting element is oxidized, the organic light-emitting element is damaged and cannot emit light anymore.

In view of the above, the inventor has invented an organic light-emitting display device having a novel structure capable of eliminating an oxygen permeation path caused by cracks or seams even if cracks or seams occur in a cathode due to foreign matter.

In view of the above, an object of the present disclosure is to provide an OLED device that is capable of overcoming problems occurring when an encapsulation unit is formed by the ALD, wherein organic light-emitting element is oxidized by oxygen (O<sub>2</sub>) plasma. Such issue is effectively resolved by employing an anti-oxidation layer capable of blocking oxygen and moisture permeation paths created by cracks or seams that may undesirably form at the cathode. Here, the anti-oxidation layer should not include any oxygen atoms.

It should be noted that objects of the present disclosure are not limited to the above-described object, and other objects

of the present disclosure will be apparent to those skilled in the art from the following descriptions.

According to an aspect of the present disclosure, there is provided an organic light-emitting display (OLED) device including: a lower substrate; an organic light-emitting element on the lower substrate; an anti-oxidation layer configured to cover the organic light-emitting element; an inorganic oxide encapsulation layer configured to cover the anti-oxidation layer; a first organic layer configured to cover the inorganic oxide encapsulation layer; and a first inorganic encapsulation layer configured to cover the first organic layer. The anti-oxidation layer configured to suppress the organic light-emitting element from being oxidized by oxygen (O<sub>2</sub>) at least in a pixel area.

The inorganic oxide encapsulation layer (e.g., an inorganic layer including oxygen atoms) and the first inorganic encapsulation layer are configured to be in contact with each other in a bezel area to seal the first organic layer

The anti-oxidation layer may be made of silicon nitride or silicon oxynitride.

The organic light-emitting element may include a cathode, and the anti-oxidation layer may block an oxygen and moisture permeation path created by cracks of the cathode.

The OLED device may further include: a capping layer on the organic light-emitting element. The cathode may be disposed under the capping layer, and the anti-oxidation layer may block an oxygen and moisture permeation path created by cracks of the capping layer.

The anti-oxidation layer may have a thickness of 0.1 μm to 0.9 μm.

The inorganic oxide encapsulation layer may be formed by atomic layer deposition (ALD) using oxygen (O<sub>2</sub>) plasma.

The inorganic oxide encapsulation layer may have a thickness of 200 Å to 1,500 Å

The inorganic oxide encapsulation layer may be made of aluminum oxide (Al<sub>2</sub>O<sub>3</sub>), zinc oxide (ZnO) or titanium oxide (TiO).

The first organic layer may be made of a polymer resin and formed by screen printing, slit coating, ink-jet printing, electric spray coating or chemical vapor deposition.

The OLED device may be a top-emission, type flexible display device.

The inorganic oxide encapsulation layer may cover the pixel area and the bezel area, and the first organic layer may be disposed to cover the pixel area and to be extended to cover a portion of the bezel area.

The OLED may further include: a second inorganic encapsulation layer configured to cover a second organic layer disposed on the first inorganic encapsulation layer and the second organic layer. The inorganic oxide encapsulation layer and the second inorganic encapsulation layer come in contact with each other in the bezel area to seal the first organic layer and the second organic layer.

According to the present disclosure, when an inorganic oxide encapsulation layer is formed by the ALD with oxygen O<sub>2</sub> plasma, it is possible to suppress an organic light-emitting element from being oxidized even if cracks occur in a cathode.

It should be noted that effects of the present disclosure are not limited to those described above and other effects of the present disclosure will be apparent to those skilled in the art from the following descriptions.

#### BRIEF DESCRIPTION OF THE DRAWINGS

The above and other aspects, features and other advantages of the present disclosure will be more clearly under-

stood from the following detailed description taken in conjunction with the accompanying drawings, in which:

FIG. 1 is a schematic plan view of an organic light-emitting display (OLED) device according to an exemplary embodiment of the present disclosure;

FIG. 2 is a cross-sectional view of the OLED device, taken along line II-II' of FIG. 1;

FIG. 3 is a schematic cross-sectional view for illustrating a transparent encapsulation unit of an OLED device according to an exemplary embodiment of the present disclosure;

FIG. 4 is a schematic cross-sectional view for illustrating a transparent encapsulation unit of an OLED device according to another exemplary embodiment of the present disclosure; and

FIG. 5 is a schematic cross-sectional view for illustrating a scenario where foreign matters are created in an OLED device according to an exemplary embodiment of the present disclosure.

#### DETAILED DESCRIPTION OF THE ILLUSTRATED EMBODIMENTS

Advantages and features of the present disclosure and methods to achieve them will become apparent from the descriptions of exemplary embodiments herein below with reference to the accompanying drawings. However, the present disclosure is not limited to exemplary embodiments disclosed herein but may be implemented in various different ways. The exemplary embodiments are provided for making the disclosure of the present disclosure thorough and for fully conveying the scope of the present disclosure to those skilled in the art. It is to be noted that the scope of the present disclosure can be defined by the claims.

The figures, dimensions, ratios, angles, numbers of elements given in the drawings are merely illustrative and are not limiting. Like reference numerals denote like elements throughout the descriptions. Further, in describing the present disclosure, descriptions on certain technical matters may be omitted in order not to obscure the gist of the present disclosure. It is to be noticed that the terms "comprising," "having," "including" and so on, used in the description and claims, should not be interpreted as being restricted to the means listed thereafter unless specifically stated otherwise. Where an indefinite or definite article is used when referring to a singular noun, e.g. "a," "an," "the," this includes a plural of that noun unless specifically stated otherwise.

In describing elements, they are interpreted as including error margins even without explicit statements.

In describing positional relationship, such as "an element A on an element B," "an element A above an element B," "an element A below an element B;" and "an element A next to an element B," another element C may be disposed between the elements A and B unless the term "directly" or "immediately" is explicitly used.

As used herein, a phrase "an element A on an element B" refers to that the element A may be disposed directly on the element B and/or the element A may be disposed indirectly on the element B via another element C.

The terms first, second, third and the like in the descriptions and in the claims are used for distinguishing between similar elements and not necessarily for describing a sequential or chronological order. These terms are used to merely distinguish one element from another. Accordingly, as used herein, a first element may be a second element within the technical idea of the present disclosure.

Like reference numerals denote like elements throughout the descriptions.

The drawings are not to scale and the relative dimensions of various elements in the drawings are depicted schematically and not necessarily to scale.

Features of various exemplary embodiments of the present disclosure may be combined partially or totally. As will be clearly appreciated by those skilled in the art, various technical interactions and linked operations are possible among some or all elements of the embodiments. Various exemplary embodiments can be practiced individually or in combination.

Hereinafter, exemplary embodiments of the present disclosure will be described in detail with reference to the accompanying drawings.

FIG. 1 is a schematic plan view of an OLED device according to an exemplary embodiment of the present disclosure.

Referring to FIG. 1, a pixel area A/A refers to the area where a plurality of pixels **111** are disposed. A pad area P/A refers to the area where a plurality of pads are disposed. A bezel area B/A refers to the area surrounding the pixel area A/A.

In the pixel area A/A of the OLED device **100**, the plurality of pixels **111**, a plurality of data lines **114** for delivering data signals generated in a data driver **115** to the plurality of pixels **111**, and a plurality of gate lines **112** for delivering gate signals generated in a gate driver **113** to the plurality of pixels **111** are disposed.

In the bezel area B/A of the OLED device **100**, the gate driver **113** for delivering gate signals to the plurality of gate lines **112** and a common voltage line **116** for supplying a common voltage  $V_{ss}$  to a cathode of each of the plurality of pixels are disposed. Some of the elements disposed in the bezel area B/A may be extended to the pad area P/A.

In the pad area P/A of the OLED device **100**, the data driver **115** for delivering image signals to the plurality of gate lines **112** and the plurality of data lines **114** connected to the data driver **115** are disposed. In the pad area P/A, a plurality of pads is disposed. Other locations and implementations are possible, depending upon circuitry layout and design.

An anisotropic conductive film (ACF) is applied in the pad area P/A. The elements such as the data driver **115**, a flexible printed circuit (FPC), a cable or some other interconnection means are attached on the pads by the anisotropic conductive film.

A transparent encapsulation unit **130** covers the bezel area B/A and the pixel area A/A. The transparent encapsulation unit **130** does not cover the pads formed on the pad area P/A. Specifically, the transparent encapsulation unit **130** effectively suppresses the moisture permeation and also has good electrical insulating property. Accordingly, if the transparent encapsulation unit **130** covers the pad area P/A, a problem may arise that the plurality of pads formed on the pad area P/A is undesirably insulated.

The plurality of pixels **111** is disposed on the lower substrate **101**. Each of the plurality of pixels **111** includes sub-pixels emitting light of red, green and blue (RGB) colors, respectively. At least one or each of the plurality of pixels **111** may further include a sub-pixel emitting light of white color. Each of the sub-pixels may further include a color filter or color refiner. Each of the plurality of pixels **111** is driven by respective thin-film transistors connected to the plurality of gate lines **112** and the plurality of data lines **114** crossing each other.

The data driver **115** generates a gate start pulse and a plurality of clock signals for driving the gate driver **113**. The data driver **115** converts a digital signal received from an

external source into an analog image signal by using gamma voltages generated in a gamma voltage generating unit. The converted image signal is delivered to the plurality of pixels **111** via the plurality of data lines **114**. The data driver **115** may be attached on the plurality of pads disposed on the lower substrate **101**.

The gate driver **113** includes a plurality of shift registers. Each of the shift registers is connected to the respective gate lines **112**. The gate driver **113** receives the gate start pulse (GSP) and the plurality of clock signals from the data driver **115**. As the shift registers in the gate driver **113** sequentially shift the gate start pulse, each of the plurality of pixels **111** connected to the respective gate lines **112** is activated.

The common voltage line **116** is disposed in the bezel area B/A to apply the common voltage  $V_{ss}$  to the cathode. In the top emission OLED device **100**, the cathode is configured as a thin film for better transmissivity. Accordingly, due to its thinness, the cathode has high electrical resistance. As a result, voltage drop may occur across the cathode and thus image quality may deteriorate. In order to help relieve this problem, the common voltage line **116** is disposed to surround the pixel area A/A. However, this is merely illustrative, and the common voltage line **116** may be formed on at least one side of the pixel area A/A. For the OLED device **100** having a relatively large-sized screen (such as for large screen TV products), auxiliary electrodes may be additionally disposed within the active area A/A.

FIG. 2 is a cross-sectional view of the OLED device, taken along line II-II' of FIG. 1.

Referring to FIG. 2, the OLED device **100** according to the exemplary embodiment of the present disclosure includes a lower substrate **101**, a thin-film transistor **220** disposed on the lower substrate **101**, an organic light-emitting element **240** driven by the thin-film transistor **220**, a gate driver **113** formed in the bezel area B/A, a common voltage line **116** formed in the bezel area B/A to apply the common voltage  $V_{ss}$  to a cathode **243**, a connection part **260** connecting the cathode **243** to the common voltage line **116**, and a transparent encapsulation unit **130** protecting the pixel area A/A from moisture or oxygen.

The lower substrate **101** may be configured as a flexible film made of plastic, (e.g., a polyimide-based material), although other types of materials (such as glass, metal, etc.) that can achieve the desired characteristics for a flexible substrate can be used.

A back plate for supporting the OLED device **100** may be provided on the bottom surface of the lower substrate **101** so that the OLED device **100** is not too easily bent.

Further, multiple buffer layers respectively made of silicon nitride  $\text{SiN}_x$  and silicon oxide  $\text{SiO}_x$  may be laminated (stacked) and disposed between the lower substrate **101** and the thin-film transistor **220**, thereby suppressing moisture and/or oxygen from permeating through the substrate **101**.

The thin-film transistor **220** includes an active layer **221**, a gate electrode **222**, a source electrode **223** and a drain electrode **224**. The active layer **221** (with its entirety or a portion thereof acting as a channel region) is covered by a gate insulating film **225**. The gate electrode **222** is made of the same material as the gate line **112** and is disposed on the gate insulating film **225** over at least a portion of the active layer **221**.

The gate electrode **222** is covered by an interlayer insulating film **226** (or other type of insulator) formed on the entire upper surface of the gate insulating film **225**. The interlayer insulating film **226** may be formed in a multilayered structure of silicon nitride and silicon oxide, but its configuration is not limited as such.

The source electrode **223** and the drain electrode **224** are made of the same material as the data line **114** and are formed on the interlayer insulating film **226** spaced apart from each other. The source electrode **223** is connected to one end of the active layer **221** via a first contact hole **229a** passing through the gate insulating film **225** and the interlayer insulating film **226**. The drain electrode **224** overlaps (or covers) at least the other end of the active layer **221** and is connected to the active layer **221** via another first contact hole **229a** passing through the gate insulating film **225** and the interlayer insulating film **226**. Although the coplanar thin-film transistor **220** is used in this example, an inverted staggered thin-film transistor may also be used.

A thin-film transistor insulating film **227** is formed on the thin-film transistor **220**. However, the thin-film transistor insulating film **227** is optional and thus may not need to be formed on the thin-film transistor **220**. The thin-film transistor insulating film **227** can also act to further block moisture permeating through the thin-film transistor **220**.

A planarization layer **228** is disposed on the thin-film transistor insulating film **227**. A second contact hole **229b** passes through the planarization layer **228** and the thin-film transistor insulating film **227**. The planarization layer **228** may be made of photo acrylic material having low dielectric permittivity. The thickness of the planarization layer **228** can be between 2  $\mu\text{m}$  and 3.5  $\mu\text{m}$ . The planarization layer **228** reduces parasitic capacitance occurring among the anode **241**, the thin-film transistor **220**, the gate lines **112** and the data lines **114** while providing a desired surface for the anode **241**.

To amplify the luminous intensity, a lens-like layer (e.g., micro lens array) may be additionally formed or attached on the planarization layer **228** where the anode **241** is disposed.

The organic light-emitting element **240** includes an anode **241**, a cathode **243** facing the anode **241**, and an organic light-emitting layer **242** disposed therebetween. A light-emitting area of the organic light-emitting layer **242** may be defined by a bank **244**.

The organic light-emitting element **240** may be configured to emit light of one of red, green and blue (RGB) colors or may be configured to emit light of white color. For the organic light-emitting element **240** emitting light of white color, a color filter or color refiner may be additionally disposed.

The anode **241** is disposed on the planarization layer **227** in the light-emitting area of each of the pixels **111**, and is connected to the drain electrode **224** of the thin-film transistor **220** via the second contact hole **229b** passing through the planarization layer **228**. The anode **241** is made of a metallic material having a high work function. In order to exhibit reflective property, the anode **241** may be made of a reflective material or may include a reflective plate on its bottom surface. The voltage at anode **241** corresponds to image signal for displaying an image via the drain electrode **224**.

The bank **244** is disposed on the planarization layer **228** between non-emitting areas of the pixels **111** and can have a tapered shape. The bank **244** overlaps (or covers) at least a portion of the edge of the anode **241**. The height of the bank **244** is for example, between 1  $\mu\text{m}$  and 2  $\mu\text{m}$ .

A spacer **245** may be formed on the bank **244**. The spacer **245** may be made of the same material as the bank **244**. For example, the bank **244** and the spacer **245** may be made of polyimide. The spacer **245** may protect the organic light-emitting element **240** from being damaged by a fine metal mask (FMM) that comes in contact thereon and used in patterning the organic light-emitting layer **242**. The height of

the spacer **245** is for example, between 1.5  $\mu\text{m}$  and 2.5  $\mu\text{m}$ . This configuration allows damage on the organic light-emitting element **240** during a process using a FMM to be reduced. However, the spacer **245** is optional and thus may not be formed on the bank **244**. Such spacers may act to maintain a desired gap or distance between the substrates.

As the bank **244** and the spacer **245** are made of organic materials, oxygen and moisture can easily permeate through them. Accordingly, if a crack (or other irregularity) occurs in the cathode **243** formed on the bank **244** and the spacer **245**, portions of the organic light-emitting element **240** near the crack may be oxidized by oxygen permeating through the bank **244** and the spacer **245**. However, the spacer **245** can be optional and thus may be eliminated depending on types of the organic light-emitting layer **242** of the organic light-emitting element **240**.

The organic light-emitting layer **242** is formed on the anode **241**. The cathode **243** is disposed facing the anode **241** with the organic light-emitting layer **242** therebetween. The organic light-emitting layer **242** may be made of a phosphorescent material, a fluorescent material, combinations thereof, or some other light emission material, and includes an electron transporting layer (ETL), a hole transporting layer (HTL), and a charge generating layer (CGL). Additional layers related to electron, hole, and charge characteristics may be implemented. Also, various functions may be combined into or integrated as a single layer.

The cathode electrode **243** is made of a very thin, metallic material having a low work function or a transparent conductive oxide (TCO). For the cathode **243** made of a metallic material, its thickness may be 1,500  $\text{\AA}$  or less, or 400  $\text{\AA}$  or less. With a thickness within the above range, the cathode **243** is a substantially transmissive layer, and thus a substantially transparent layer. The common voltage  $V_{ss}$  is applied to the cathode **243**.

A capping layer **246** (or some other equivalent functional layer) is disposed on the cathode **243**. The capping layer **246** is employed to improve optical properties of the organic light-emitting element **240**. The capping layer **246** may be made of a material having a high refractive index. For example, with the capping layer **246** having a refractive index from 1.7 to 2.5, the luminous efficiency and the viewing angle of the organic light-emitting element **240** can be improved. The thickness of the capping layer **246** may be between 100  $\text{\AA}$  and 1,000  $\text{\AA}$ . The capping layer **246** may be made of a transition metal such as Ag, Au, Fe, Ni, Cu, Zn and Cr. Although the capping layer **246** is included in the OLED device **100** in FIG. 2, the capping layer **246** may be eliminated therefrom depending upon the characteristics of the particular OLED device or display application.

The gate driver **113** includes a plurality of thin-film transistors. The plurality of thin-film transistors of the gate driver **113** is formed together with the thin-film transistors **220** in the pixel area  $A/A$  during the same process. Therefore, the thin-film transistors of the gate driver **113** will not be described to avoid redundancy.

The common voltage line **116** may be made of the same metal as the gate lines **112** and/or the data lines **114** as a single layer or multiple layers.

The common voltage line **116** applies the common voltage  $V_{ss}$  to the cathode **243**. The thin-film transistor insulating layer **227** may be disposed on the common voltage line **116**. The common voltage line **116** is disposed more to the outside than the gate driver **113**.

The connection part **260** may be disposed on the planarization layer **228** above the gate driver **113**. The connection part **260** connects the common voltage line **116** to the

cathode **243**. The connection part **260** may be made of the same material as the anode **241**.

The connection part **260** is connected to the common voltage line **116** along a sloped surface of one end of the planarization layer **228**. If there is an insulating layer between the connection part **260** and the common voltage line **116**, the connection part **260** is connected to the common voltage line **116** via a contact hole.

The cathode **243** is disposed on the bank **244** and/or the spacer **245** to be extended to a part of the bezel area B/A. The cathode **243** is connected to the connection part **260** in the bezel area B/A where no bank is formed.

The operation of the above-described structure will be described briefly. The gate electrode **222** of the thin-film transistor **220** receives driving signals generated in the gate electrode **113** via the gate line **112**. Further, the conductivity of the active layer **221** is varied in response to a signal applied to the gate electrode **222**. Then, an image signal applied to the source electrode **223** via the active layer **221** is applied to the anode **241**. Then, the common voltage  $V_{SS}$  is applied to the cathode **243** and the organic light-emitting layer **242** emits light, thereby displaying images.

Thus far, the structure with respect to the cross section of the thin-film transistor **220** and the organic light-emitting element **240** disposed in the bezel area B/A and the pixel area A/A has been described.

Hereinafter, the transparent encapsulation unit **130** of the OLED device **100** according to an exemplary embodiment of the present disclosure will be described. The transparent encapsulation unit **130** includes an anti-oxidation layer **134**, an inorganic oxide encapsulation layer **131**, a first organic layer **132** and a first inorganic encapsulation layer **133**.

The anti-oxidation layer **134** is formed on the capping layer **246** in the pixel area A/A. Specifically, the anti-oxidation layer **134** covers (or overlaps) the capping layer **246** at least in the pixel area A/A.

If no capping layer is formed on the cathode **243**, the anti-oxidation layer **134** is directly disposed on and covers (overlaps) the cathode **243**.

The anti-oxidation layer **134** blocks oxygen and moisture permeation paths created by cracks in the cathode **243**, and thereby suppresses the organic light-emitting element **240** from being oxidized. The anti-oxidation layer **134** is formed using an inert gas such as nitrogen ( $N_2$ ), argon (Ar) and helium (He) in order not to oxidize the organic light-emitting element **240**. By doing so, the organic light-emitting element **240** is not oxidized during the process of forming the anti-oxidation layer **134**.

In forming the anti-oxidation layer **134**, silicon nitride ( $SiN_x$ ) or silicon oxynitride ( $SiON$ ) are used. The anti-oxidation layer **134** suppresses the organic light-emitting element **240** from being oxidized when cracks occur in the cathode **243**. Accordingly, the anti-oxidation layer **134** can be configured as thin as possible, as long as oxidation by oxygen  $O_2$  plasma (or due to other sources) can be suppressed. For example, the anti-oxidation layer **134** may have a thickness of 1  $\mu m$  or less. For example, the anti-oxidation layer **134** may have a thickness between 0.1  $\mu m$  and 0.9  $\mu m$ . In particular, if the anti-oxidation layer **134** has a thickness of 0.9  $\mu m$  or greater, the anti-oxidation layer **134** is less flexible and cracks are more easily occurred therein. Accordingly, for implementing a flexible display device, it is desirable to make the thickness of the anti-oxidation layer **134** as small as possible as long as the organic light-emitting element **240** can be effectively suppressed from being oxidized. The particular thickness can be set in view of the trade-off in performance depending upon the desired char-

acteristics of the OLED device in the final product. For example, a smartphone or table having a foldable form-factor may require better flexibility, while a minimum level of anti-oxidation would be sufficient. Alternatively, an OLED product in an environment more prone to oxygen permeation (e.g. outdoor advertisement display, vehicle display screens, etc.) may be configured with a relatively thicker anti-oxidation layer, although some amount of flexibility would be lost. The anti-oxidation layer **134** may be formed by the chemical vapor deposition (CVD). In particular, as the CVD is performed in a short period of deposition time, it is possible to reduce manufacturing time of the OLED device **100**.

By forming the inorganic oxide encapsulation layer **131** after the anti-oxidation layer **134** is formed, it is possible to suppress the organic light-emitting element **240** from being oxidized by oxygen ( $O_2$ ) plasma or other sources used during the process of depositing the inorganic oxide encapsulation layer **131**.

The inorganic oxide encapsulation layer **131** is made of aluminum oxide ( $Al_2O_3$ ), zinc oxide ( $ZnO$ ) or titanium oxide (TiO). The inorganic oxide encapsulation layer **131** may be formed by the atomic layer deposition (ALD).

The thickness of the inorganic oxide encapsulation layer **131** may be between 200  $\text{\AA}$  to 1,500  $\text{\AA}$ . In particular, the inorganic oxide encapsulation layer **131** formed by the ALD can effectively suppress moisture permeation even if it is relatively thin. In addition, as the inorganic oxide encapsulation layer **131** can be made relatively thin, it is advantageous for implementation in thin and flexible display devices. Moreover, as the inorganic oxide encapsulation layer **131** can achieve high visible light transmissivity, it is appropriate for top emission OLED devices.

The first organic layer **132** is disposed on the inorganic oxide encapsulation layer **131**. The first organic layer **132** may be made of a polymer resin. For example, acrylic or epoxy resin may be used. Such polymer resin is flowable (due to certain surface tension and fluid characteristics) and can planarize (or flatten) the level (or layer height) difference caused by the bank **244** or the spacer **245**. The first organic layer **132** may be formed by screen printing, slit coating, ink-jet printing, or electric spray coating.

The first organic layer **132** may have a thickness between 3  $\mu m$  and 20  $\mu m$ . For example, the first organic layer **132** may have a thickness between 5  $\mu m$  and 10  $\mu m$ . If the thickness of the first organic layer **132** is 3  $\mu m$  or less, some portion may not be properly applied during screen printing process, and thus undesirable pin holes appear. If the thickness of the first organic layer **132** is 10  $\mu m$  or greater, the flexible display device has reduced flexibility, thereby causing cracks to occur more easily when the device is bent or flexed.

The first organic layer **132** may be made of silicon oxycarbon (SiOC). Silicon oxycarbon has a carbon content of 1% to 50%. With a higher carbon content, the silicon oxycarbon becomes more flowable, so that it can easily cover (or compensate for) foreign matter or debris particles and thus exhibits better planarization. If the first organic layer **132** is made of silicon oxycarbon, it has a thickness of 1.5  $\mu m$  to 3  $\mu m$ .

The first inorganic encapsulation layer **133** may be made of aluminum oxide ( $Al_2O_3$ ), silicon nitride ( $SiN_x$ ), silicon oxide ( $SiO_y$ ), etc. or various combinations thereof. The first inorganic encapsulation layer **133** may be formed by the ALD or the CVD.

If the first inorganic encapsulation layer **133** is formed by the ALD, the first inorganic encapsulation layer **133** may have a thickness of 200 Å to 1,500 Å.

If the first inorganic encapsulation layer **133** is formed by the CVD, the first inorganic encapsulation layer **133** may have a thickness of 5,000 Å to 15,000 Å. In particular, since the CVD method requires a shorter period of deposition time than the ALD method, it is advantageous for forming relatively thick films and mass production can be more easily achieved.

The inorganic oxide encapsulation layer **131** and the first inorganic encapsulation layer **133** come in contact with each other in the bezel area B/A, to seal the first organic layer **132**. Accordingly, the first organic layer **132** is not directly exposed to air, and thus no oxygen or moisture permeation path is created.

FIG. 3 is a schematic cross-sectional view illustrating a transparent encapsulation unit of an OLED device according to an exemplary embodiment of the present disclosure.

For convenience of illustration, FIG. 3 only shows the lower substrate **101**, the organic light-emitting element **240** and the transparent encapsulation unit **130** of the OLED device **100** according to the embodiment shown in FIGS. 1 and 2, and other elements are not illustrated merely for avoiding redundancy.

The transparent encapsulation unit **130** (or some other type of barrier against moisture, oxygen, impurities, etc.) according to the exemplary embodiment of the present disclosure includes the anti-oxidation layer **134**, the inorganic oxide encapsulation layer **131**, the first organic layer **132** and the first inorganic encapsulation layer **133**.

The anti-oxidation layer **134** covers at least the pixel area A/A. Although the anti-oxidation layer is formed only in the pixel area A/A in FIG. 3, the anti-oxidation layer **134** may have the same area as the inorganic oxide encapsulation layer **133**, i.e., it may be formed on the entire upper surface of the substrate **101**.

The inorganic oxide encapsulation layer **131** covers the pixel area A/A and the bezel area B/A. This is, however, merely illustrative. The inorganic oxide encapsulation layer **131** may not be formed at some portions of the bezel area B/A.

The first organic layer **132** covers the pixel area A/A and is extended to cover a part of the bezel area B/A.

The first inorganic encapsulation layer **133** covers the first organic layer **132** and comes in contact with the inorganic oxide encapsulation layer **131** in the bezel area B/A to seal the first organic layer **132**. Accordingly, the first organic layer **132** is not directly exposed to air, and thus no direct oxygen and moisture permeation path is created.

FIG. 4 is a schematic cross-sectional view for illustrating a transparent encapsulation unit of an OLED device according to another exemplary embodiment of the present disclosure.

A transparent encapsulation unit **430** of an OLED device **400** according to this exemplary embodiment of the present disclosure is a modification of the transparent encapsulation unit **130** of the OLED device **100** according to the exemplary embodiment of the present disclosure in FIGS. 2 and 3.

The transparent encapsulation unit **430** of the OLED device **400** according to this exemplary embodiment of the present disclosure further includes a second organic layer **432** and a second inorganic encapsulation layer **437**.

The second organic layer **432** is disposed on the first inorganic encapsulation layer **133** to cover the pixel area A/A and to be extended to cover a part of the bezel area B/A.

Although the second organic layer **432** has the same area as the first organic layer **132** in FIG. 4, the second organic layer **432** may have a different or larger area than that of the first organic layer **132**. If the second organic layer **432** is further extended toward the bezel area B/A from the end of the first organic layer **132**, the end of the second organic layer **432** becomes smoother, reducing cracks in the second inorganic encapsulation layer **437**.

The second inorganic encapsulation layer **437** covers the second organic layer **432** and comes in contact with the first inorganic encapsulation layer **133** to seal the second organic layer **432**. Accordingly, the second organic layer **432** is not directly exposed to air, and thus no oxygen and moisture permeation path is created.

The second inorganic encapsulation layer **437** may be made of one of the materials usable for the first inorganic encapsulation layer **133**. The second inorganic encapsulation layer **437** may be formed by one of the techniques for forming the first inorganic encapsulation layer **133**.

The elements of the OLED device **400** excluding those described above are identical to those of the OLED device **100**; and, therefore, will not be described to avoid redundancy.

This configuration allows the transparent encapsulation unit **430** to more effectively suppress moisture permeation by the second inorganic encapsulation layer **437** and the second organic layer **432**.

FIG. 5 is a schematic cross-sectional view illustrating a scenario where foreign matter (debris) particles are created in an organic light-emitting element of an OLED device according to an exemplary embodiment of the present disclosure.

Referring to FIG. 5, foreign matter X is created on the organic light-emitting element **240** and the bank **244**. Cracks may occur in the cathode **243** and the capping layer **246** by the foreign matter X. Even so, oxygen permeation paths are effectively blocked by the anti-oxidation layer **134**. That is, spaces made by the cracks in the cathode **243** and the capping layer **246** are sufficiently filled with the anti-oxidation layer **134**, so that the organic light-emitting element **240** is not oxidized during the process of forming the inorganic oxide encapsulation layer **131**.

The elements of the OLED device **500** excluding those described above are identical to those described above with respect to the OLED device **100**; and, therefore, will not be described to avoid redundancy.

According to some embodiments of the present disclosure, a touch panel (or other types of touch screen related structures) may be disposed on the transparent encapsulation unit. According to some embodiments of the present disclosure, a barrier film may be disposed on the transparent encapsulation unit. According to some embodiments of the present disclosure, a color filter or color refiner may be disposed on the transparent encapsulation unit.

Thus far, exemplary embodiments of the present disclosure have been described in detail with reference to the accompanying drawings. However, the present disclosure is not limited to the exemplary embodiments, and modifications and variations can be made thereto without departing from the technical idea of the present disclosure. Accordingly, the exemplary embodiments described herein are merely illustrative and are not intended to limit the scope of the present disclosure. The technical idea of the present disclosure is not limited by the exemplary embodiments. The scope of protection sought by the present disclosure is

## 13

defined by the appended claims and all equivalents thereof are construed to be within the true scope of the present disclosure.

What is claimed is:

1. An organic light-emitting display (OLED) device, comprising:

a lower substrate including a pixel area and a bezel area adjacent to or surrounding the pixel area;

an organic light-emitting element in the pixel area on the lower substrate;

an anti-oxidation layer configured to cover the organic light-emitting element;

an inorganic oxide encapsulation layer configured to cover the anti-oxidation layer;

a first organic layer configured to cover the inorganic oxide encapsulation layer; and

a first inorganic encapsulation layer configured to cover the first organic layer,

wherein the anti-oxidation layer is configured to suppress the organic light-emitting element from being oxidized by the oxygen (O<sub>2</sub>) plasma at least in the pixel area, wherein the anti-oxidation layer is disposed only in the pixel area corresponding to the organic light-emitting element and not disposed in the bezel area.

2. The OLED display of claim 1, wherein the inorganic oxide encapsulation layer and the first inorganic encapsulation layer are configured to be in contact with each other in a bezel area to seal the first organic layer.

3. The OLED display of claim 2, wherein the anti-oxidation layer is made of silicon nitride or silicon oxynitride.

4. The OLED display of claim 3, wherein the organic light-emitting element comprises a cathode, and wherein the anti-oxidation layer is configured to block an oxygen and moisture permeation path created by cracks of the cathode.

5. The OLED display of claim 4, further comprising a capping layer on the organic light-emitting element, wherein the cathode is disposed under the capping layer, and

## 14

wherein the anti-oxidation layer is configured to block an oxygen and moisture permeation path created by cracks of the capping layer.

6. The OLED display of claim 4, wherein the anti-oxidation layer has a thickness of 0.1 μm to 0.9 μm.

7. The OLED display of claim 6, wherein the inorganic oxide encapsulation layer is made of aluminum oxide (Al<sub>2</sub>O<sub>3</sub>), zinc oxide (ZnO) or titanium oxide (TiO).

8. The OLED display of claim 4, wherein the OLED device is a top-emission, flexible display device.

9. The OLED display of claim 1, wherein the inorganic oxide encapsulation layer has a thickness of 200Å to 1,500Å.

10. The OLED display of claim 1, wherein the first organic layer is made of a polymer resin and is formed by screen printing, slit coating, ink-jet printing, electric spray coating or chemical vapor deposition.

11. The OLED display of claim 1, wherein the inorganic oxide encapsulation layer covers the pixel area and the bezel area, and

wherein the first organic layer is disposed to cover the pixel area and to be extended to cover a part of the bezel area.

12. The OLED display of claim 1, further comprising: a second organic layer disposed on the first inorganic encapsulation layer; and

a second inorganic encapsulation layer configured to cover the second organic layer,

wherein the first inorganic encapsulation layer and the second inorganic encapsulation layer are configured to come in contact with each other in the bezel area to seal the first organic layer and the second organic layer.

13. The OLED display of claim 1, wherein a transparent encapsulation unit comprises the anti-oxidation layer, the inorganic oxide encapsulation layer, the first organic layer and the first inorganic encapsulation layer.

14. The OLED display of claim 13, wherein a touch panel is disposed on the transparent encapsulation unit.

15. The OLED display of claim 13, wherein a color filter is disposed on the transparent encapsulation unit.

\* \* \* \* \*

专利名称(译)	用于抑制有机发光元件损坏的有机发光二极管显示器		
公开(公告)号	<a href="#">US9773994</a>	公开(公告)日	2017-09-26
申请号	US14/925599	申请日	2015-10-28
[标]申请(专利权)人(译)	乐金显示有限公司		
申请(专利权)人(译)	LG DISPLAY CO. , LTD.		
当前申请(专利权)人(译)	LG DISPLAY CO. , LTD.		
[标]发明人	KIM JI MIN		
发明人	KIM, JI-MIN		
IPC分类号	H01L27/32 H01L51/52		
CPC分类号	H01L51/5218 H01L51/5234 H01L51/5253 H01L2251/5315		
代理机构(译)	DENTONS美国律师事务所		
优先权	1020140149932 2014-10-31 KR		
其他公开文献	US20160126498A1		
外部链接	<a href="#">Espacenet</a> <a href="#">USPTO</a>		

摘要(译)

有机发光显示 ( OLED ) 器件包括 : 下基板;有机发光元件设置在下基板上;覆盖有机发光元件的抗氧化层;覆盖抗氧化层的无机氧化物封装层;覆盖无机氧化物封装层的第一有机层;和覆盖第一有机层的第一无机封装层。抗氧化层被配置为至少在像素区域中抑制有机发光元件被氧 ( O 2 ) 等离子体氧化。

